



CLAY TARGET MACHINES

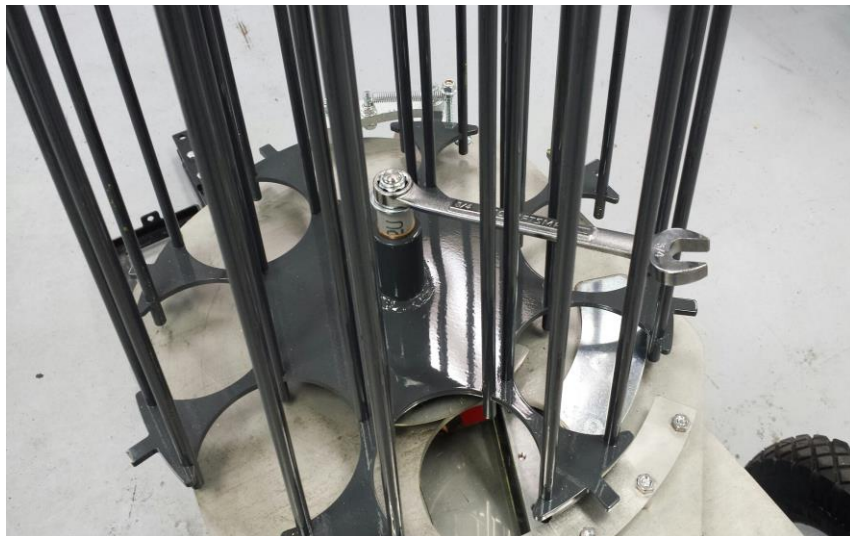
## OWNERS MANUAL FOR MEC MODEL 408 CHANDELLE

**CAUTION: ANY MEC CLAY TARGET MACHINE MUST BE IN THE DISARMED STATE WITH THE BATTERY DISCONNECTED PRIOR TO MAKING ANY ADJUSTMENTS, LOADING THE CLAY TARGETS OR TRANSPORTATION OF MACHINE.**

**Step 1** – Securely set the machine on level ground, either on the optional T Cart with hardware supplied or a pallet. If using a pallet, please make sure that it is fastened with clamps to keep machine from tipping. **IF NOT FASTENED SECURELY, SERIOUS INJURY OR DAMAGE TO MACHINE CAN OCCUR!!!**

DO NOT CONNECT THE BATTERY. Ensure that the machine is in the **DISARMED/SAFE** position.

**Step 2** – In most cases, your machine has been supplied to you ready to fire. If so, please proceed to **Step 3**. If your machine is supplied in a box without its carousel (shown below) fitted, you will need to attach it to the machine. Simply slide the carousel weldment onto the top plate shaft. If no grease is present, please add a little bit to the shaft. You may have to spin/rotate the carousel for it to slide on. Next, place the gray plastic collar over the shaft and onto the flange bearing in the carousel. Now place the  $\frac{3}{4}$ " washer and nut onto the threads and tighten. Do not over tighten. You want a little bit of resistance there, but not too much. You shouldn't be able to spin the carousel with one finger.





CLAY TARGET MACHINES

**Step 3** – Check the height / clearance of the knife-edges by placing a clay in the carousel. Rotate the carousel so that the clay starts to pass underneath the inner and outer knife separator blades. The clay must pass freely under the knife separator blades without binding but with the minimum of clearance. Adjust if necessary with 7/16” open ended wrench. The height on both the inner and outer knife edge will need to be adjusted. Please note, the photos below show knife edges being set with a Standard target instead of a Rabbit target, but the same principle applies.

*\*Please note that all MEC Clay Target Machines are set for White Flyer “BIO” targets. If you choose to use a different brand of target, you may need to adjust the knives to that targets thickness for optimal results.*



**Step 4** – Put some clay’s in the carousel, but do not fill just yet, as this will make it easier to adjust the elevation and tilt of the machine. It should be pointed out that if the machine is tilted forward, it will throw a low target along the ground. Tilting all the way back will allow the machine to throw a vertical teal target.

**Step 5** – Adjust the machines elevation by loosening black Tilt handle. There is no need to loosen the 3/4” Nylon nuts as they are loose enough to allow the machine to be elevated. Tip machine backwards to the desired angle and then retighten the handle.

**Step 6** – Adjust machine tilt by loosening the black Tilt handle. There is no need to loosen the 3/4” Nylon nuts as they are loose enough to allow the machine tilt. The machine can be tilted to one side to allow the target to curl. When viewed from behind, the machine can be leaned further to the left for a dome down type target when throwing standard clays only.

**Please note that on all MEC Chandelle machines a Rabbit Plate will need to be fitted to the Throwing Plate to allow Rabbit targets to be thrown.**



CLAY TARGET MACHINES

## **FITTING THE RABBIT PLATE**

Before attempting to work on the machine, please ensure that the machine is in the **DISARMED/SAFE** position and that the battery is disconnected. \*Turning of the  $\frac{3}{4}$ " lock nut could cause the arm to initiate movement; please stand in a safe location and use **EXTREME CAUTION**. Please call the customer service help line for any concerns or if you need further recommendations on installing the Rabbit Plate.

**Step 1** – Remove the outer guard by un-doing the  $\frac{3}{4}$ " locknut on the front and the three  $\frac{1}{2}$ " wingnuts on the rear of the machine as shown in the photo below.



**Step 2** – The Rabbit Plate is attached to the back side of the Throwing Plate and will need to be removed using a  $\frac{7}{16}$ " wrench. There are four Allen bolts, attaching the Rabbit Plate to the Throwing Plate.



CLAY TARGET MACHINES



*\*Machine pictured on optional T-cart*

**Step 3** – With the Rabbit Plate removed, it now needs to be attached to the front side of the Throwing Plate as shown in the photo below. Simply hold the plate straight to the throwing plate and push the front rail to the full open position. Slide plate on and release the front rail. Replace the Allen bolts to securely attach the rabbit plate to the throwing plate.



**Step 4** – Refit the Outer Guard to the side of the machine.



CLAY TARGET MACHINES

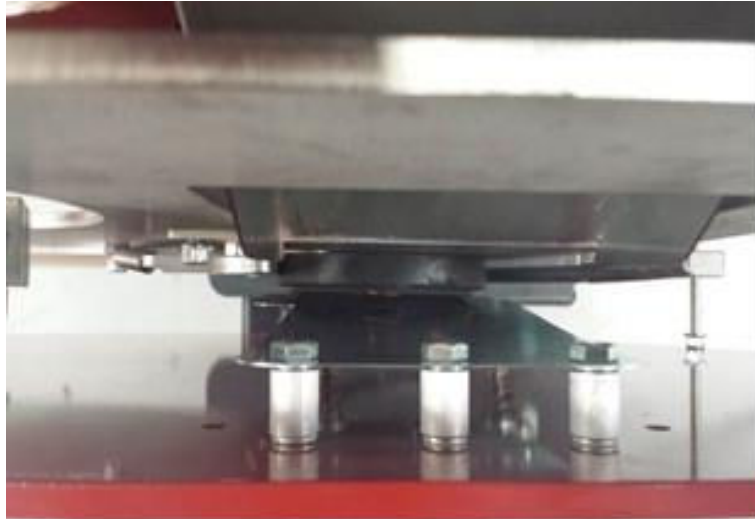
**Step 5** – The Clay Deflector that is attached to the inside of the Outer Guard will now need to be adjusted. This is done by un-winding the two lower 7/16” locknuts on the side of the outer guard. By loosening these two locknuts the spring-loaded Clay Deflector is pushed closer to the clay. This is necessary as the thinner Rabbit clays would fall out the bottom of the machine if the Clay Deflector was left set for Standard clays.



**Step 6** - Un-wind the two locknuts enough so that when a Rabbit clay is loaded the deflector supports it and holds the clay against the throwing plate as shown below.



CLAY TARGET MACHINES



**Step 7** – Fill the machine with targets and set the tilt and elevation before reconnecting the battery.

**Step 8** – Connect the terminals from the wire harness to the battery, (a fully charged, good quality, deep cycle marine battery is recommended.) It is imperative that the “RED” wire go to the Positive Post and the “BLACK” wire go to the Negative Post. Never hammer the terminals onto the posts of the battery, or over tighten the terminals. Once the battery is connected you can connect the handheld to the machine.

**Step 9** – Visually check, from the rear of the machine, that the motion of the Throwing Arm is not restricted or blocked in any way.

**CAUTION: ALWAYS OPERATE THE MACHINE FROM BEHIND, NEVER FROM THE FRONT OR THE SIDES OF THE MACHINE. KEEP HANDS AND BODY PARTS AWAY FROM THE MACHINE WHEN ARMING, RELEASING AND DISARMING.**



CLAY TARGET MACHINES



Shown above is your new handheld. The **Yellow** button on the left is your “ARM” button, and the **Green** button on the right is your “FIRE” button.

**Step 10** – Standing at arm’s length behind the machine, press the yellow “ARM” button. The machine will load a clay and come to the armed position, and is now ready to fire and must be treated with **EXTREME CAUTION**.

**Step 11** – To check for clay flight and direction, you will need to follow these steps to throw one target at a time without rearming the machine.

- 1) Push and release the Yellow “ARM” button again to turn off the red “ARMED” light.
- 2) Push and release the Green “FIRE” button, this will fire one clay without re-arming the machine. Adjust pitch and angle of the machine and repeat these steps until desired clay path is achieved.



CLAY TARGET MACHINES

**Step 12** – You can adjust the distance that the clay is thrown by extending the spring. This is achieved by winding tension on or off the main spring using a  $\frac{3}{4}$ " wrench or the optional  $\frac{3}{4}$ " extended socked which can be attached to an impact drive. This should be done with the machine in the disarmed/safe condition for small adjustments. After adjusting the main spring for the correct throwing distance, the nuts on the spring stud must be tightened securely against each other.



**Step 13** – The pull cord or optional radio release can now be connected to the machine.

**Step 14** – The machine is now ready for use, continue by pressing the Yellow “ARM” button on your handheld remote (this will allow you to fire from a pull cord or radio release.)

**Step 15** – With the machine pointed in a safe direction, press the fire button on the pull cord or radio release. This will cause the machine to fire a clay and then reset to the firing position. Pressing the fire button again will do the same as above. Pressing and holding the fire button will continuously fire clays without delay.

**Step 16** – To disarm the machine, push the Yellow “ARM” button, this will turn off the “ARMED” indicator light off. The machine can still be fired one last time, so use **Extreme Caution!**





CLAY TARGET MACHINES

Your machine is now operating smoothly and ready for use. It is critical that you never load or make adjustment to the machine unless it is disarmed and the battery disconnected. While in storage, the machine must be left in the disarmed state and the battery disconnected. Any spring tension does not need to be released.

Thanks for choosing MEC! Every machine is hand set and tested prior to leaving our shop to ensure quality. We take pride in our products, so you can have a better experience in the field. Your patronage is very much appreciated!

For any questions regarding setup or use of any MEC Clay Target Machines, please call our toll-free number listed below, or visit us on the web to watch our setup and demonstration videos.

MEC Shooting Sports  
800 Horicon Street, Suite 1  
Mayville, WI 53050 USA  
920-387-6005  
1-800-797-4632  
[www.mecshootingsports.com](http://www.mecshootingsports.com)

To receive our monthly newsletter, go to our website, select the “Shooting Sports Lifestyle” tab and click “Join Us”.

Follow us on Facebook, Twitter, and Linked In @ MEC Shooting Sports, and on Instagram @Mecshootingsports.official to see the latest news from MEC.